

# Jiangsu Wintek Industrial Technology Co., Ltd.

Version: 2021

Trustable Experienced and Professional Integrated Plant Supplier  
Latest Technology of International Industrial Gas Equipment Industry

Suzhou, Jiangsu, China

# INDEX

【01】 Company Profile

【02】 Main Products & Service

【03】 Software, Design, Certificates

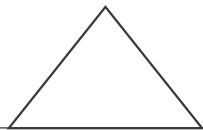
【04】 Hardware

# 【01】

---

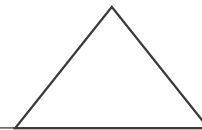
## Company Profile

## Location



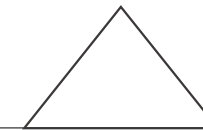
Suzhou  
Changzhou  
Nanyang  
Kaifeng

## Introduction



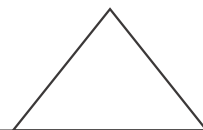
About Us

## Key Focus



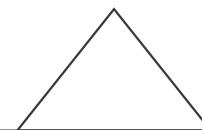
Cryogenic Air Separation Plant  
.....

## Organization



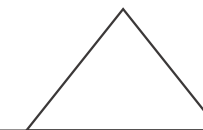
Main Structure

## Summary



Comprehensive  
Info

## Highlights



Technical Advantage  
Production Advantage  
Quality Advantage  
Service Advantage

Your  
Trustable  
Partner



Location





## Introduction

**Jiangsu Wintek Industrial Technology Co., Ltd.**, located in Suzhou city of China, adjacent to the international metropolis Shanghai, keeps in line with the international leading benchmark in terms of economy, transportation, product technology level and market rules.

We focus on research and development, design, and manufacturing of **cryogenic air separation plant and industrial gas equipment**, as well as export trade of **air separation plant, chemical machinery, energy equipment, auxiliary equipment, industrial valves instruments**, etc.

In the field of air separation plant, we adopt and develop the latest technology to provide our customers with the most advanced and cost-effective air separation plant, and strive to become the most reliable air separation plant supplier for China domestic and overseas customers. We are also committed to the export of China's industrial technology products and become a reliable green channel for foreign customers to purchase China's industrial equipment.



## Introduction

The core products by our self-design and manufacturing mainly include:

- 10000 Series-GOX/GAN Internal Compression Cryogenic Air Separation Plant
- 11000 Series- GAN/LIN Cryogenic Air Separation Plant
- 12000 Series- GOX/GAN/LAr Cryogenic Air Separation Plant
- 13000 Series- GOX/GAN External Compression Cryogenic Air Separation Plant
- 14000 Series- LOX/LIN/LAr Cryogenic Air Separation Plant
- 15000 Series- LOX/LIN Cryogenic Air Separation Plant
- 16000 Series- Cryogenic Gas Liquefier
- 17000 Series- Special Gas Plant
- 18000 Series- GAN PSA Nitrogen Generator
- 19000 Series- GOX PSA Oxygen Generator
- 20000 Series-Oxygen Generator by VPSA Technology
- 21000 Series-Hydrogen Generator
- 31000 Series-Cryogenic Liquid Storage Tank
- 31100 Series-Vacuum Powder Insulation
- 31200 Series-Multi-Layer Insulation
- 31300 Series-Flat Bottom
- 32000 Series-Cryogenic Liquid Vaporizer
- 32100 Series-Water Bath Vaporizer
- 32200 Series-Ambient Vaporizer



## Introduction

The outsourcing industrial technology products mainly include:

51000 Series-Self-Cleaning Air Filter

52000 Series-Air Compressor

52100 Series-Reciprocating

52200 Series-Screw

52300 Series-Centrifugal

53000 Series-Air Blower

53100 Series-Roots

53200 Series-Centrifugal

54000 Series-Vacuum Pump

55000 Series-Air Precooler and Air Chiller

56000 Series-Heat Exchanger

56100 Series-BAHX

56200 Series-Tube and Shell

57000 Series-Turbine Expander

57100 Series-Oil Bearing

57200 Series-Air Bearing





## Introduction

The outsourcing industrial technology products-continue previous page:

58000 Series-Cryogenic Liquid Pump

58100 Series-Reciprocating

58200 Series-Centrifugal

59000 Series-Valve

59100 Series-Cryogenic Pneumatic

59200 Series-Cryogenic Manual

59300 Series-Anti-Corrosion

59400 Series-Others

60000 Series-Industrial Instruments

60100 Series-Pressure Transmitter

60200 Series-RTD

60300 Series- Surveying Accessary

60700 Series- Surveying Total Station

60900 Series-Gas Analyzer



## Key Focus

Cryogenic Air Separation Plant:

10000 Series-GOX/GAN Internal Compression Cryogenic Air Separation Plant

11000 Series- GAN/LIN Cryogenic Air Separation Plant

12000 Series- GOX/GAN/LAr Cryogenic Air Separation Plant

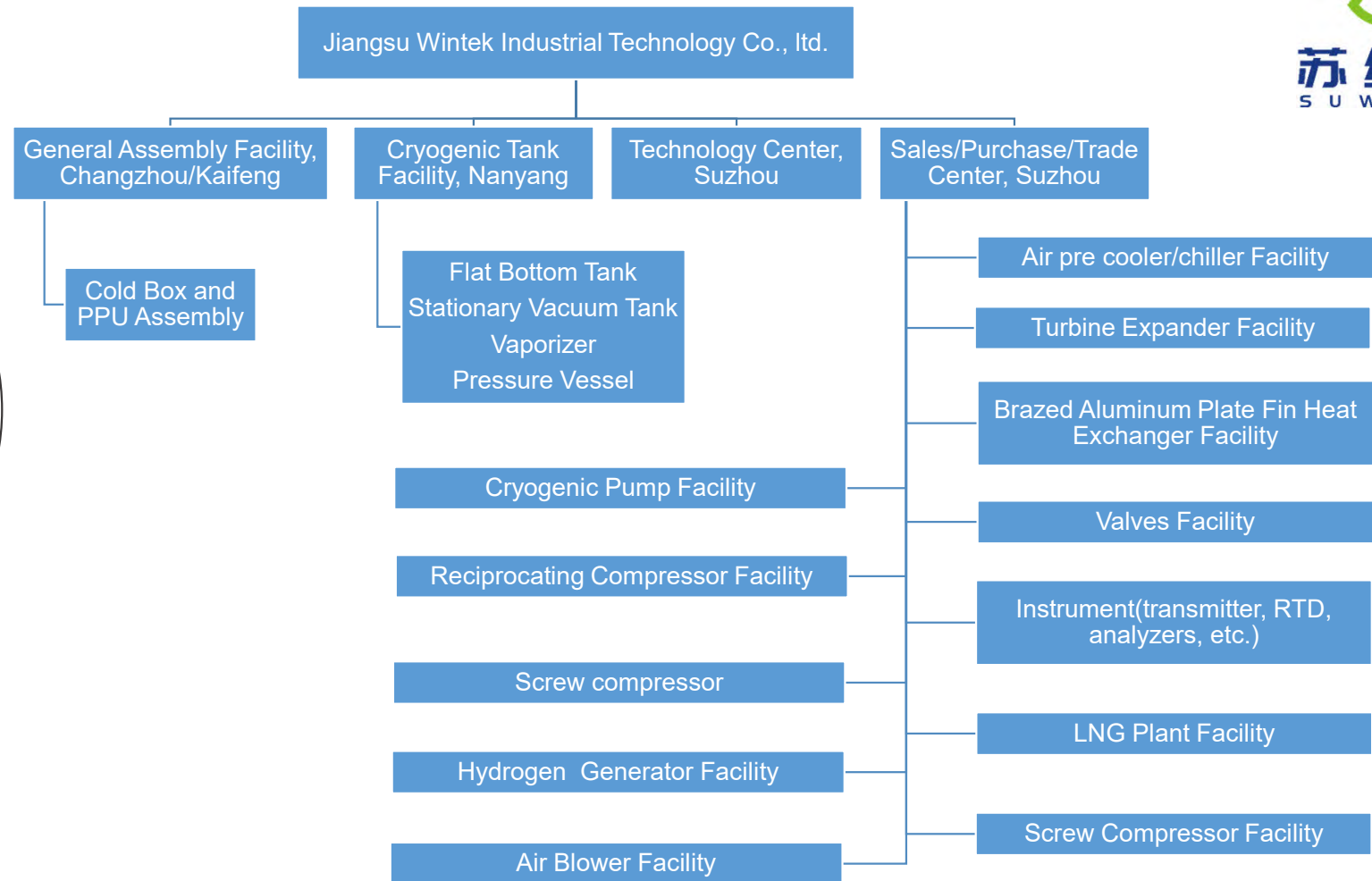
13000 Series- GOX/GAN External Compression Cryogenic Air Separation Plant

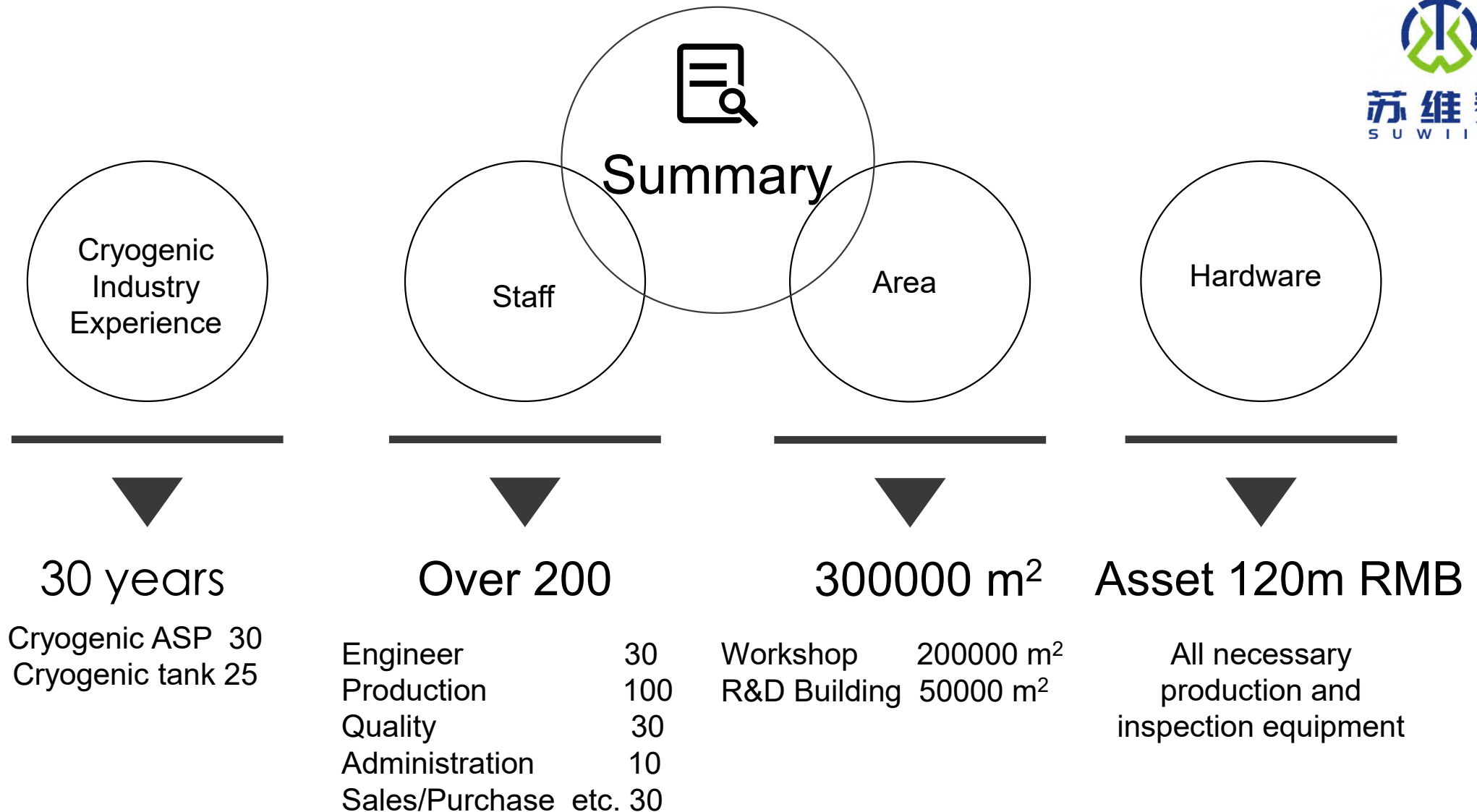
14000 Series- LOX/LIN/LAr Cryogenic Air Separation Plant

15000 Series- LOX/LIN Cryogenic Air Separation Plant

16000 Series- Cryogenic Gas Liquefier

17000 Series- Special Gas Plant







苏维泰  
S U W I T E



## Highlights

### 【01】 Design:

All cryogenic air separation plant is by advanced process simulation software to ensure material and heat balance.

All pressure vessel is by professional strength design software.

All heat calculation for heat exchangers is by professional software.

All structure design is by 2D and 3D design software to ensure accuracy.

### 【02】 Production/Inspection:

Main production/inspection are by automatic equipment to ensure assembly accuracy.

CNC plasma and flame cutting machine are used for material preparation.

Steel sheet processing production line can automatically do double-sided shot blasting, rust removal, automatic painting and drying.

Plate groove processing is completed with processing equipment imported from Germany and USA.

CNC hydraulic universal bending machine is for steel sheet pre bending and rolling.

Dozens of spectrum analyzers, automatic welding machines and radiographic testing machines will ensure whole process inspection and quality.

5D CNC processing center and dynamic balance test device can ensure high accuracy and shaft/impeller quality of turbine expanders.

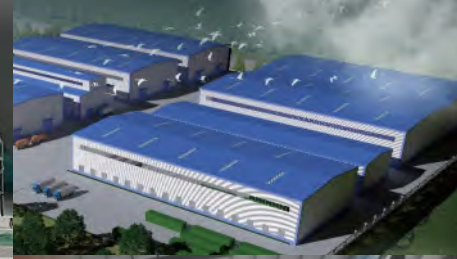
### 【03】 Quality Assurance/Project implementation:

There is a complete set of quality control procedures from technical clarification, project design, raw material procurement, parts processing, assembly and commissioning.

### 【04】 Service

One-day Timely Response and Whole life Service.





## Photo Overview

# 【02】

---

## Main Products & Service

## Key Design & Manufacturing Products

Liquid Air Separation Plant  
Gas Air Separation Plant  
Nitrogen Generator  
Oxygen/Nitrogen Liquefier

Cryogenic Air  
Separation Plant

Vacuum Powder Cryogenic Liquid Tank  
Large Flat Bottom Cryogenic Liquid Tank  
Water bath/Ambient Vaporizer

Cryogenic Liquid  
Tank & Vaporizer

1000~50000Nm<sup>3</sup>/day Skid LNG Plant  
Other capacity site installation LNG Plant

LNG Plant

1~1500Nm<sup>3</sup>/hr

Hydrogen Generator



## Key Sourcing & Trading Products

Air blower

Roots air blower  
Centrifugal air blower

Screw compressor  
Reciprocating compressor

Gas compressor

Heat exchanger

Tube and shell type  
BAHX type

Cryogenic valve  
Anti corrosion valve  
Other valve  
RTD  
Pressure transmitter

Valve & Instrument

Gas(Air) dryer

Adsorption type  
Refrigeration type

LO,LN,LAr,LNG,LCO2  
pump

Cryogenic pump

Air chiller

Refrigeration type

Oil bearing type  
Air bearing type

Turbine expander

Extensible

.....

.....

Extensible

## Liquid Air Separation Plant



350TPD Liquid ASP  
with Flat Bottom Tank



## Liquid Air Separation Plant



苏维泰  
S U V I T E



50TPD Liquid ASP, 50TPD  
Nitrogen Liquefier

[www.wintekgroup.com](http://www.wintekgroup.com)

Mobile: +86 18936090872

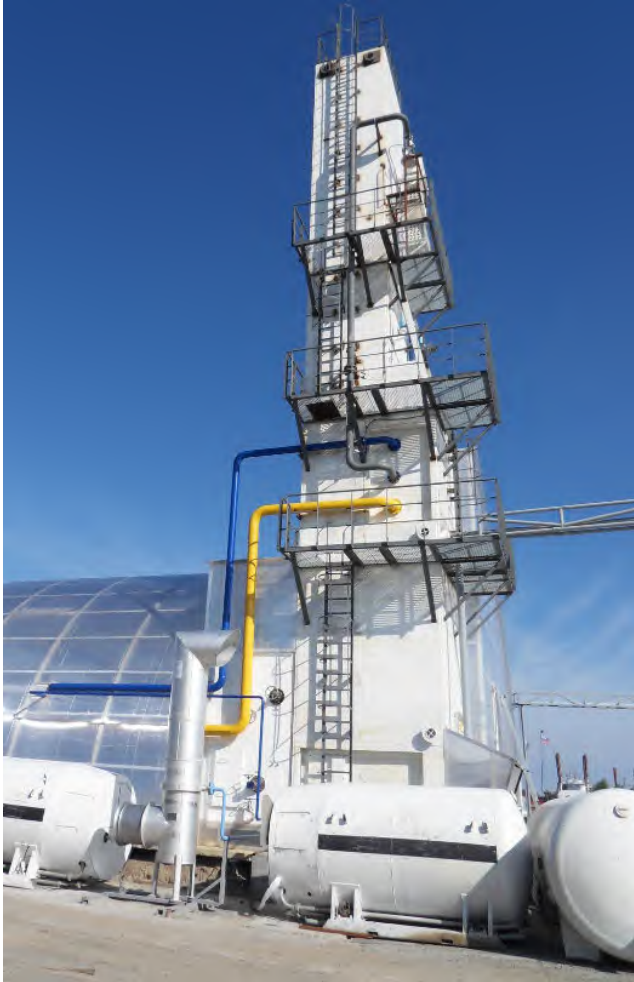
[sales@wintekgroup.com](mailto:sales@wintekgroup.com)





苏维泰  
SUWITE

## Liquid Air Separation Plant



25TPD Liquid ASP

[www.wintekgroup.com](http://www.wintekgroup.com)

Mobile: +86 18936090872

[sales@wintekgroup.com](mailto:sales@wintekgroup.com)

## Liquid Air Separation Plant



17TPD Liquid ASP with Tank and Vaporizer



## Gas Air Separation Plant



45000Nm<sup>3</sup>/hr Gas

## Gas Air Separation Plant



40000Nm<sup>3</sup>/hr Gas



## Gas Air Separation Plant



35000Nm<sup>3</sup>/hr Gas

[www.wintekgroup.com](http://www.wintekgroup.com)

Mobile: +86 18936090872

[sales@wintekgroup.com](mailto:sales@wintekgroup.com)



## Gas Air Separation Plant



苏维泰  
UWITE



30000Nm<sup>3</sup>/hr Gas  
ASP with PPU

[www.wintekgroup.com](http://www.wintekgroup.com)

Mobile: +86 18936090872

[sales@wintekgroup.com](mailto:sales@wintekgroup.com)

## Gas Air Separation Plant



18000Nm<sup>3</sup>/hr Gas  
ASP with PPU



## Gas Air Separation Plant



苏维泰  
SUVITE



10000Nm<sup>3</sup>/hr Gas ASP  
with PPU

[www.wintekgroup.com](http://www.wintekgroup.com)

Mobile: +86 18936090872

[sales@wintekgroup.com](mailto:sales@wintekgroup.com)



维泰  
I I T E

## Gas Air Separation Plant



1500Nm<sup>3</sup>/hr Gas ASP  
with Centrifugal Air  
Compressor, PPU,  
Oxygen Compressor

[www.wintekgroup.com](http://www.wintekgroup.com)

Mobile: +86 18936090872

[sales@wintekgroup.com](mailto:sales@wintekgroup.com)



## Gas Air Separation Plant



1000Nm<sup>3</sup>/hr Gas ASP  
with Reciprocating Air  
Compressor

## Gas Air Separation Plant



550Nm<sup>3</sup>/hr Gas ASP with  
Reciprocating Air Compressor  
and Oxygen Compressor



## Nitrogen Generator



苏维泰  
S U W I T E



4500Nm<sup>3</sup>/hr Nitrogen Generator with  
Centrifugal Air Compressor and PPU

[www.wintekgroup.com](http://www.wintekgroup.com)

Mobile: +86 18936090872

[sales@wintekgroup.com](mailto:sales@wintekgroup.com)

## Nitrogen Generator



2500Nm<sup>3</sup>/hr Nitrogen Generator  
with Centrifugal Air Compressor



## Nitrogen Generator



苏维泰  
SUVITE



1200Nm<sup>3</sup>/hr Nitrogen  
Generator with Reciprocating  
Air Compressor and PPU

[www.wintekgroup.com](http://www.wintekgroup.com)

Mobile: +86 18936090872

[sales@wintekgroup.com](mailto:sales@wintekgroup.com)

## Nitrogen Generator



苏维泰  
S U W I T E



800Nm<sup>3</sup>/hr Nitrogen  
Generator with Screw Air  
Compressor and PPU

[www.wintekgroup.com](http://www.wintekgroup.com)

Mobile: +86 18936090872

[sales@wintekgroup.com](mailto:sales@wintekgroup.com)



## Oxygen/Nitrogen Liquefier



4000Nm<sup>3</sup>/hr Nitrogen Liquefier

## Cryogenic Rectification Column



苏维泰  
SUWITE



Type: Sieve tray & Structured Packing

[www.wintekgroup.com](http://www.wintekgroup.com)

Mobile: +86 18936090872

[sales@wintekgroup.com](mailto:sales@wintekgroup.com)



## Large Flat Bottom Cryogenic Liquid Tank



Work pressure:  
10KPa ~ 40KPa  
Volume:  
200m<sup>3</sup> ~ 50000m<sup>3</sup>  
Storage media:  
LNG,LIN,LOX,LAR,LC<sub>2</sub>  
H<sub>4</sub>,etc.  
Heat insulation:  
Perlite powder

## Stationary and Mobile Cryogenic Liquid Tank



苏维泰  
SUWITE



Work pressure: 0.2~1.6MPa

Volume: 5m<sup>3</sup> ~ 150m<sup>3</sup>

Storage media: LNG, LIN, LOX, LAR, etc.

Heat insulation: vacuum/vacuum multi-layer

[www.wintekgroup.com](http://www.wintekgroup.com)

Mobile: +86 18936090872

[sales@wintekgroup.com](mailto:sales@wintekgroup.com)

## Water bath/Ambient Vaporizer



Heat source: Ambient, electricity, hot water, steam, etc.  
Media: LNG, LIN, LOX, LAR, etc.



## LNG Plant



Capacity: 10 000~1 000 000Nm<sup>3</sup>/day LNG Plant  
Skid available for ≤ 100 000Nm<sup>3</sup>/day LNG Plant





苏维泰  
SUWITE

## Hydrogen Generator



Capacity: 1~1500Nm<sup>3</sup>/hr Hydrogen

[www.wintekgroup.com](http://www.wintekgroup.com)

Mobile: +86 18936090872

[sales@wintekgroup.com](mailto:sales@wintekgroup.com)

## Air blower



苏维泰  
IUWITE



### Air Blower Centrifugal Type & Roots Type

[www.wintekgroup.com](http://www.wintekgroup.com)

Mobile: +86 18936090872

[sales@wintekgroup.com](mailto:sales@wintekgroup.com)



## Gas compressor



Air Compressor  
Screw Type & Reciprocating Type

## Heat Exchanger



Brazed Aluminum Plate Fin  
Heat Exchanger (BAHX)



## Heat Exchanger



苏维泰  
SUWITE



## Tube and Shell Heat Exchanger

[www.wintekgroup.com](http://www.wintekgroup.com)

Mobile: +86 18936090872

[sales@wintekgroup.com](mailto:sales@wintekgroup.com)



苏维泰  
S U W I T E

## Valve & Instrument



Valve, Pressure Transmitter, RTD, Analyzer, etc.

[www.wintekgroup.com](http://www.wintekgroup.com)

Mobile: +86 18936090872

[sales@wintekgroup.com](mailto:sales@wintekgroup.com)



# Gas(Air) Dryer & Air Chiller



苏维泰  
SUVITE



参数设置				天然气脱水系统								2016-11-9 16:04:35			
吸附时间:	63	分	11 秒	出口温度:	+24	℃	入口压力:	+9	MPa	1#露点	●	2#露点	●	3#露点	●
加热时间:	63	分	11 秒	A塔温度:	+80	℃	1#出口压力:	-5	MPa	4#露点	●	5#露点	●	6#露点	●
A塔状态:	再生			B塔温度:	+39	℃	2#出口压力:	+0	MPa	7#露点	●	8#露点	●	9#露点	●
B塔状态:	吸附			加热温度:	+141	℃	A塔压力:	+206	MPa	10#露点	●	11#露点	●	12#露点	●
入口压力:	+3.1 MPa			冷却温度:	+79	℃	B塔压力:	+0	MPa	13#露点	●	14#露点	●	15#露点	●
出口压力:	+3.1 MPa			炉内温度:	+150	℃	旁路:	+28	mm	16#露点	●	17#露点	●	18#露点	●
再生时间:	● 排水阀门			出口露点:	-97	℃	再生流量:	+15	MPa	19#露点	●	20#露点	●	21#露点	●
报警时间				报警信息											
2016-11-9 16:04:35 C 露点传感器故障															
2016-11-9 14:40:24 C 1#出口压差传感器故障															
2004-1-1 12:00:14 C A塔压差传感器故障															
2016-11-6 12:17:33 C 露点过高															

Gas(Air) Dryer, Precooler, Chiller



## Cryogenic Pump



苏维泰  
S U W I T E



Medium: LO, LN, LAr, LNG, LCO<sub>2</sub>, etc.  
Type: Reciprocating, Centrifugal, Submersible

[www.wintekgroup.com](http://www.wintekgroup.com)

Mobile: +86 18936090872

[sales@wintekgroup.com](mailto:sales@wintekgroup.com)





苏维泰  
SUWITE

## Turbine Expander



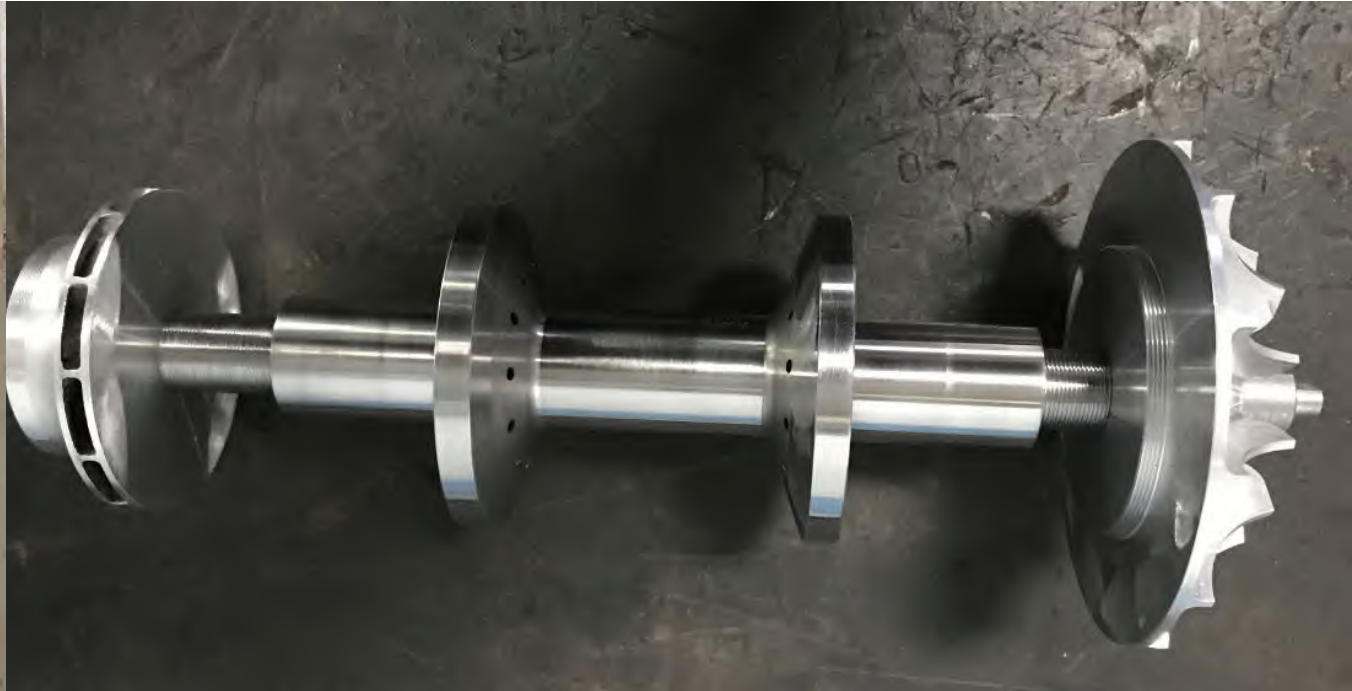
Medium: Air, Nitrogen, Natural Gas, etc.  
Type: Oil Bearing

[www.wintekgroup.com](http://www.wintekgroup.com)

Mobile: +86 18936090872

[sales@wintekgroup.com](mailto:sales@wintekgroup.com)

## Turbine Expander



Medium: Air, Waste Nitrogen, etc.  
Type: Air Bearing

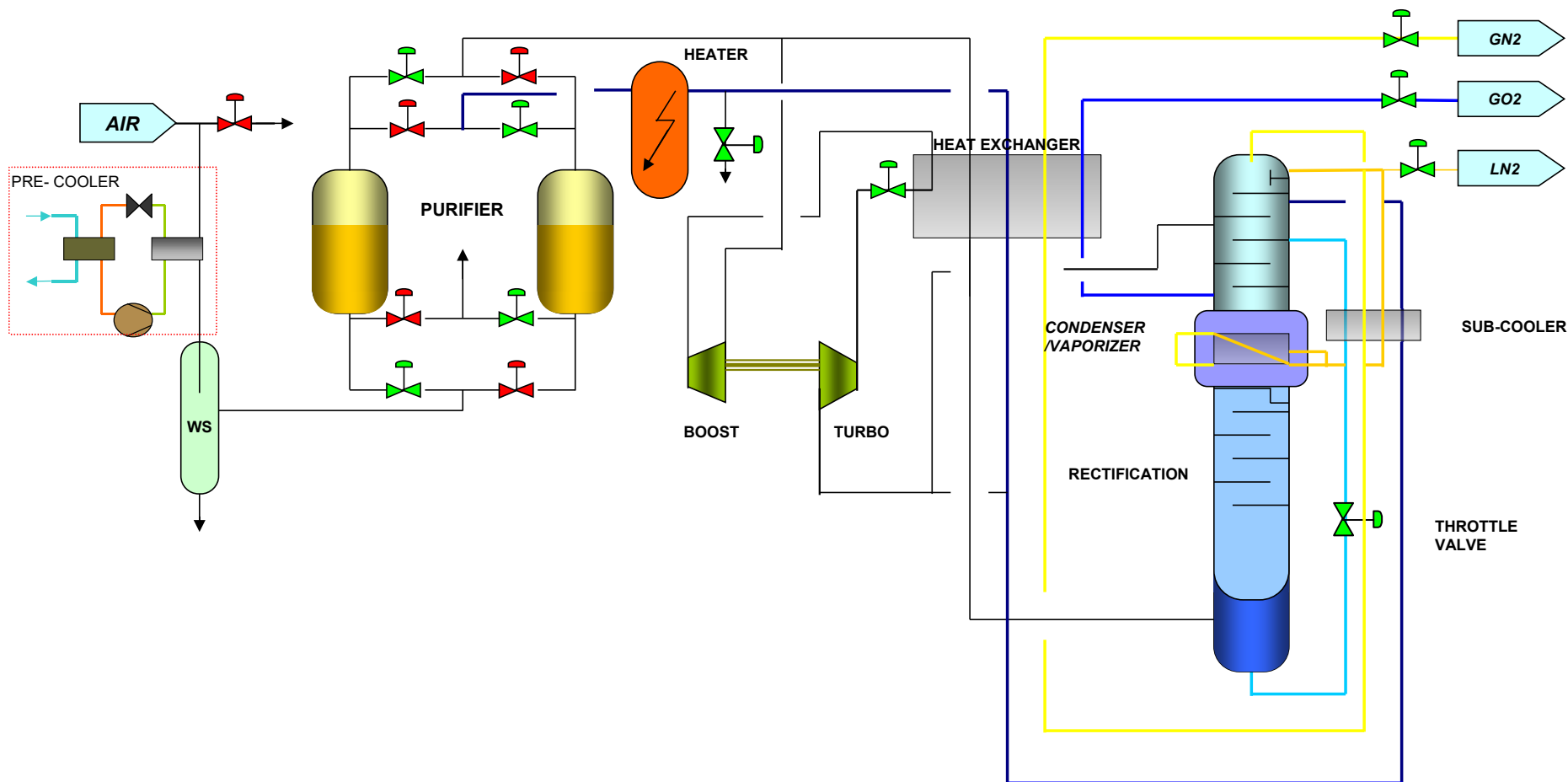


# 【03】

---

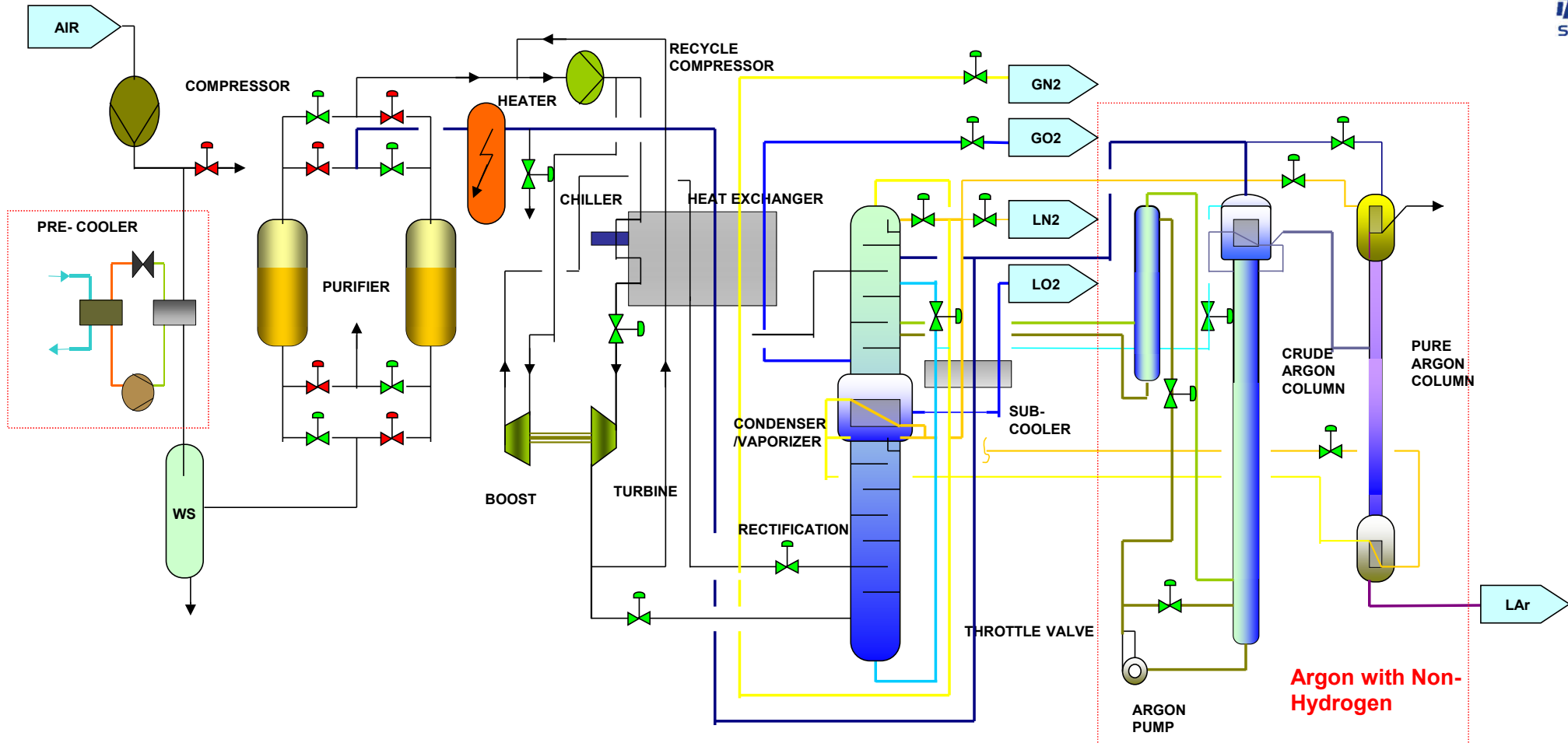
## Software, Design, Certificates

# Cryogenic ASP Sample Process Flow Diagram



Common GO, LO,GA,LN Product

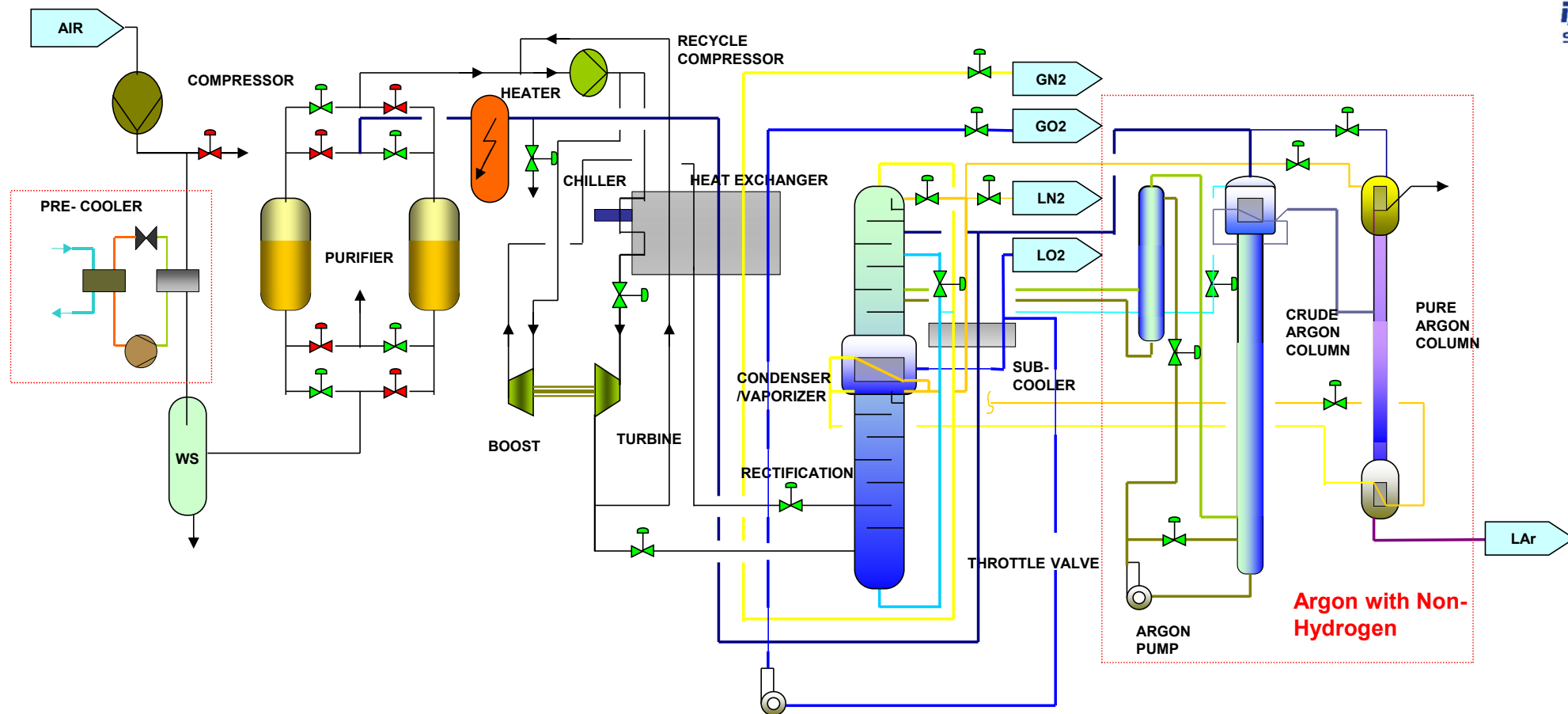
# Cryogenic ASP Sample Process Flow Diagram



Common GO, LO, GA ,LN, LAr Product, External Compression



# Cryogenic ASP Sample Process Flow Diagram

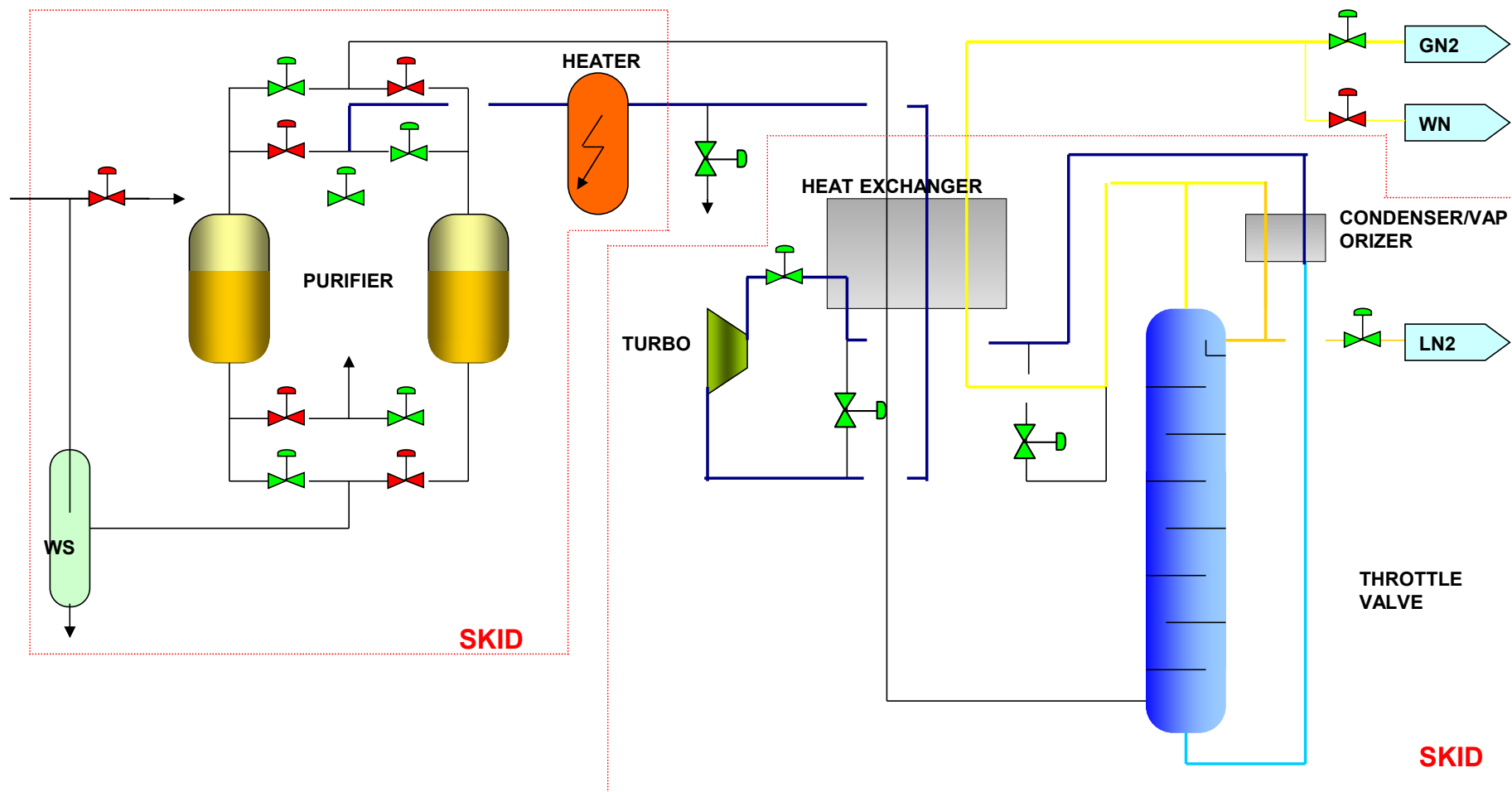


Common GO, LO, GA ,LN, LAr Product, Internal Compression



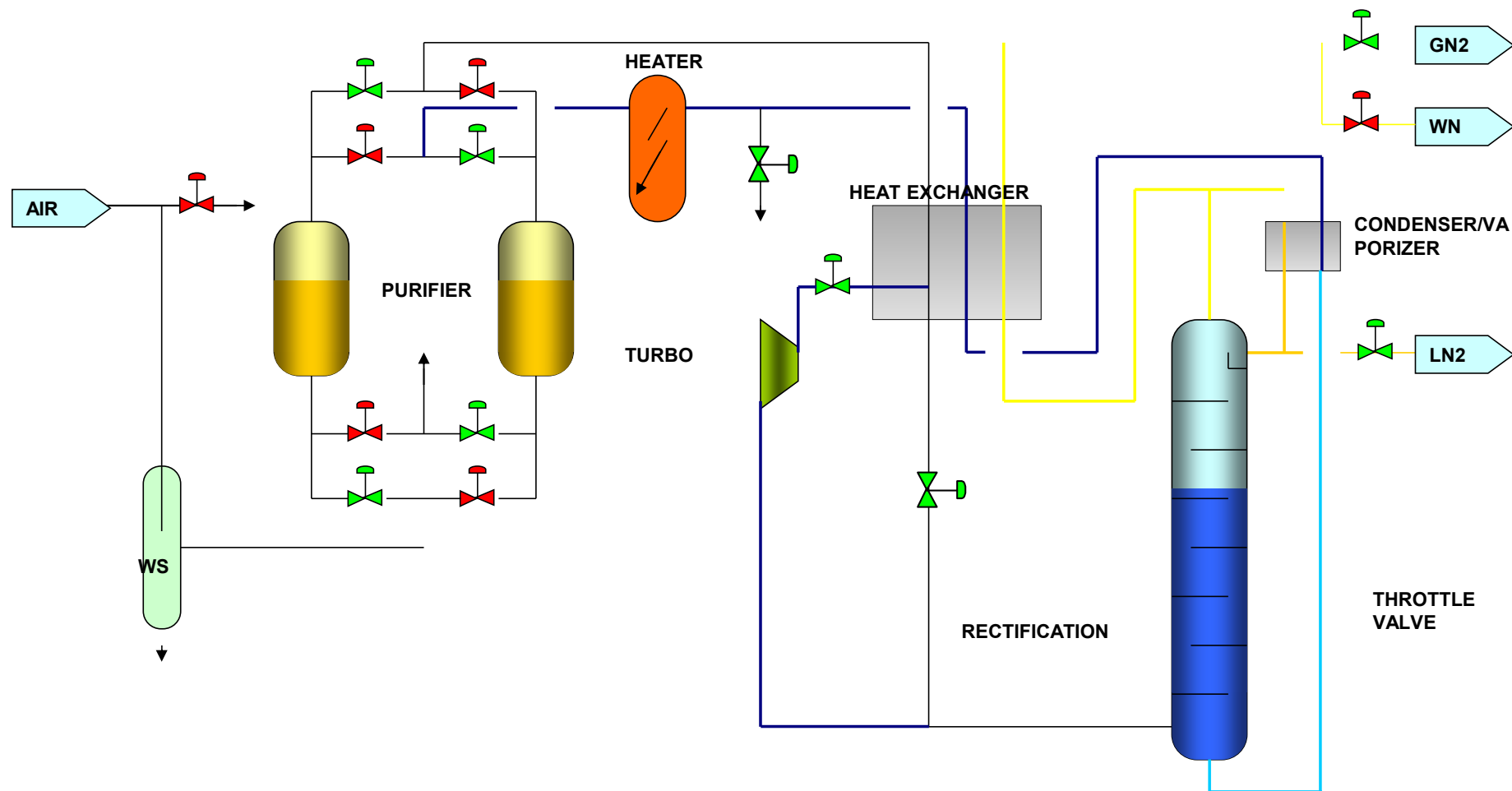
苏维泰  
S U V I T E

## Cryogenic ASP Sample Process Flow Diagram



Nitrogen Generator-Single Column, Reverse Expansion

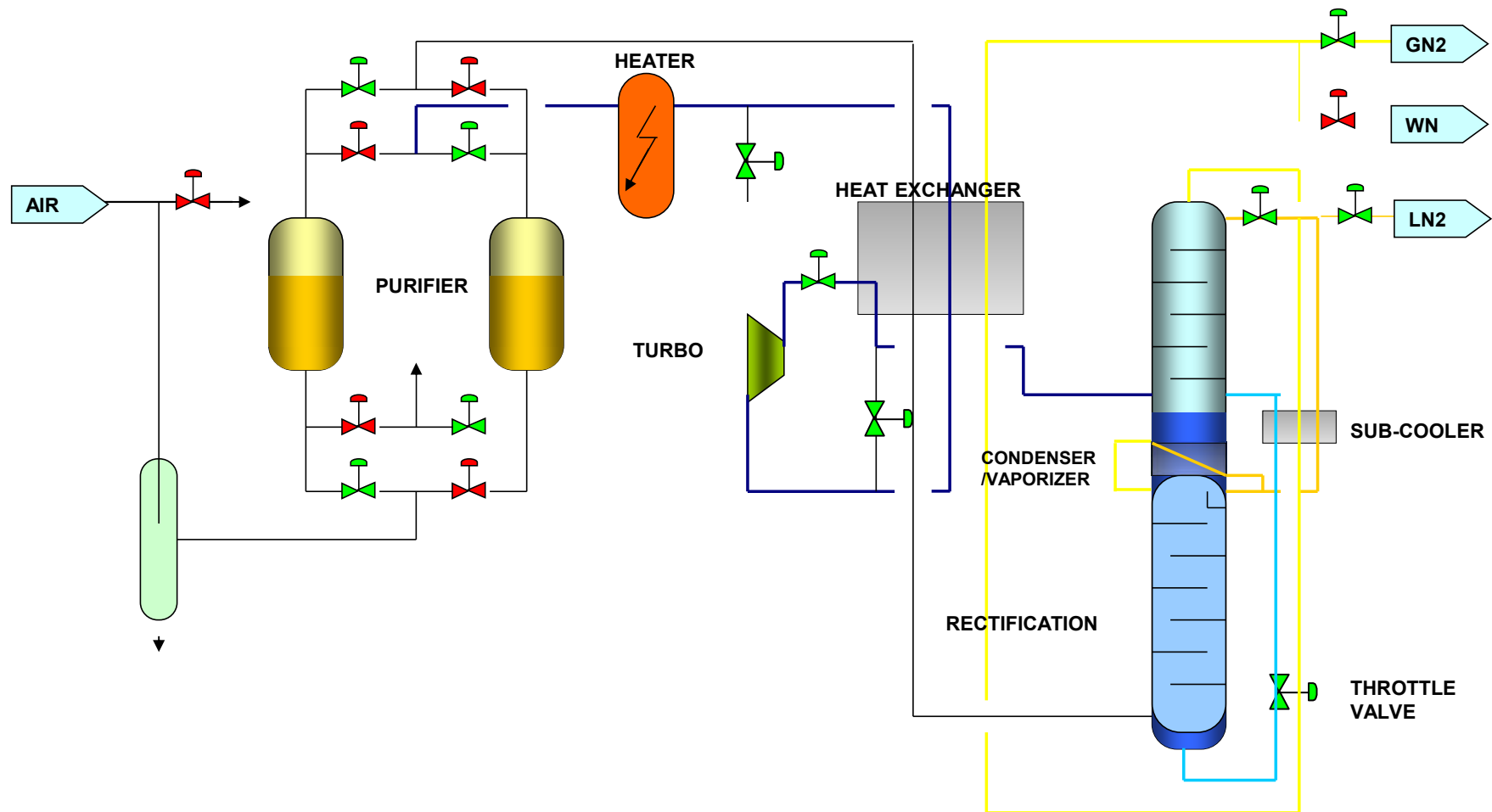
# Cryogenic ASP Sample Process Flow Diagram



Nitrogen Generator-Single Column, Forward Expansion

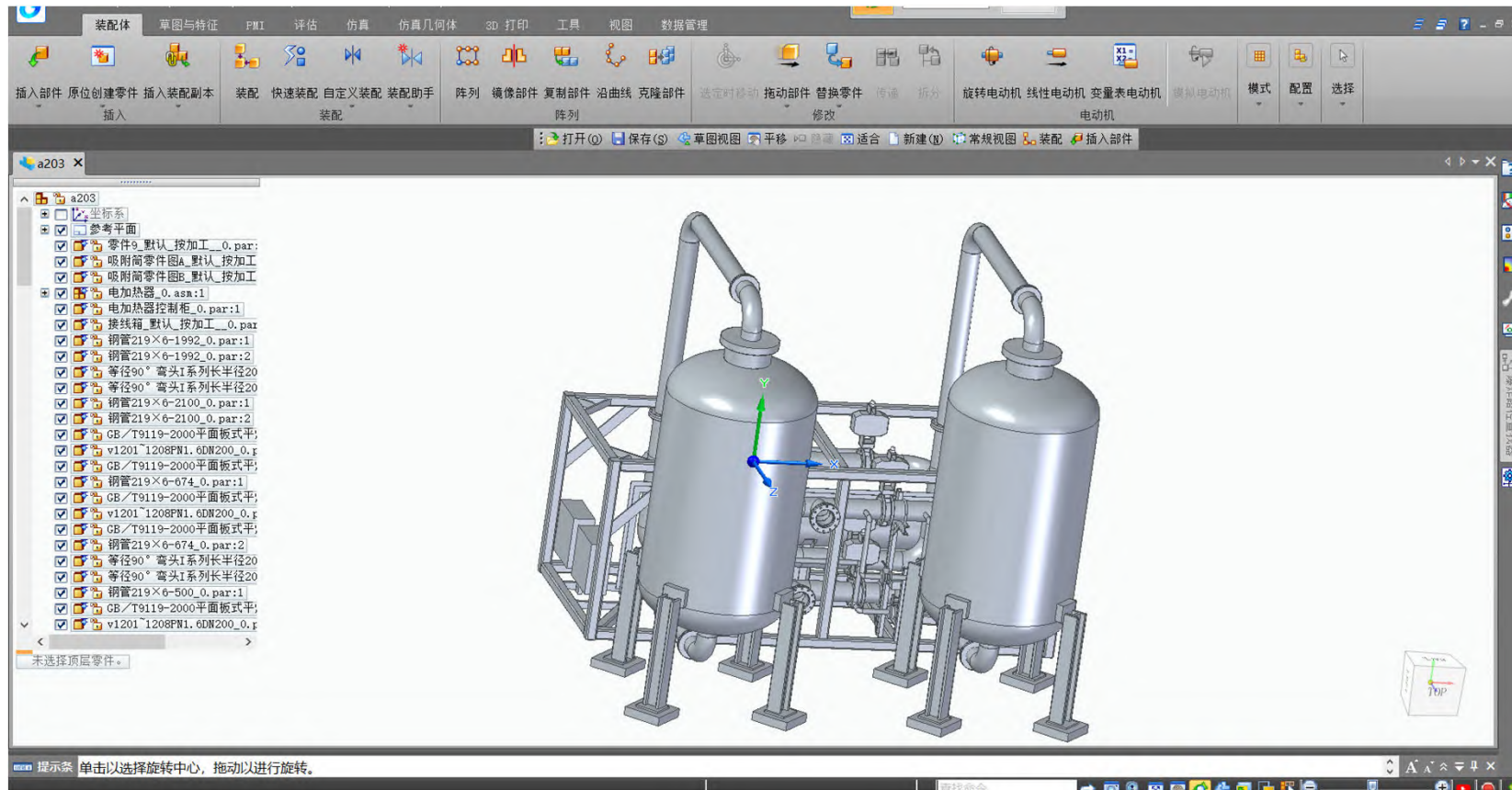


# Cryogenic ASP Sample Process Flow Diagram



Nitrogen Generator-Double Column

# Design Software



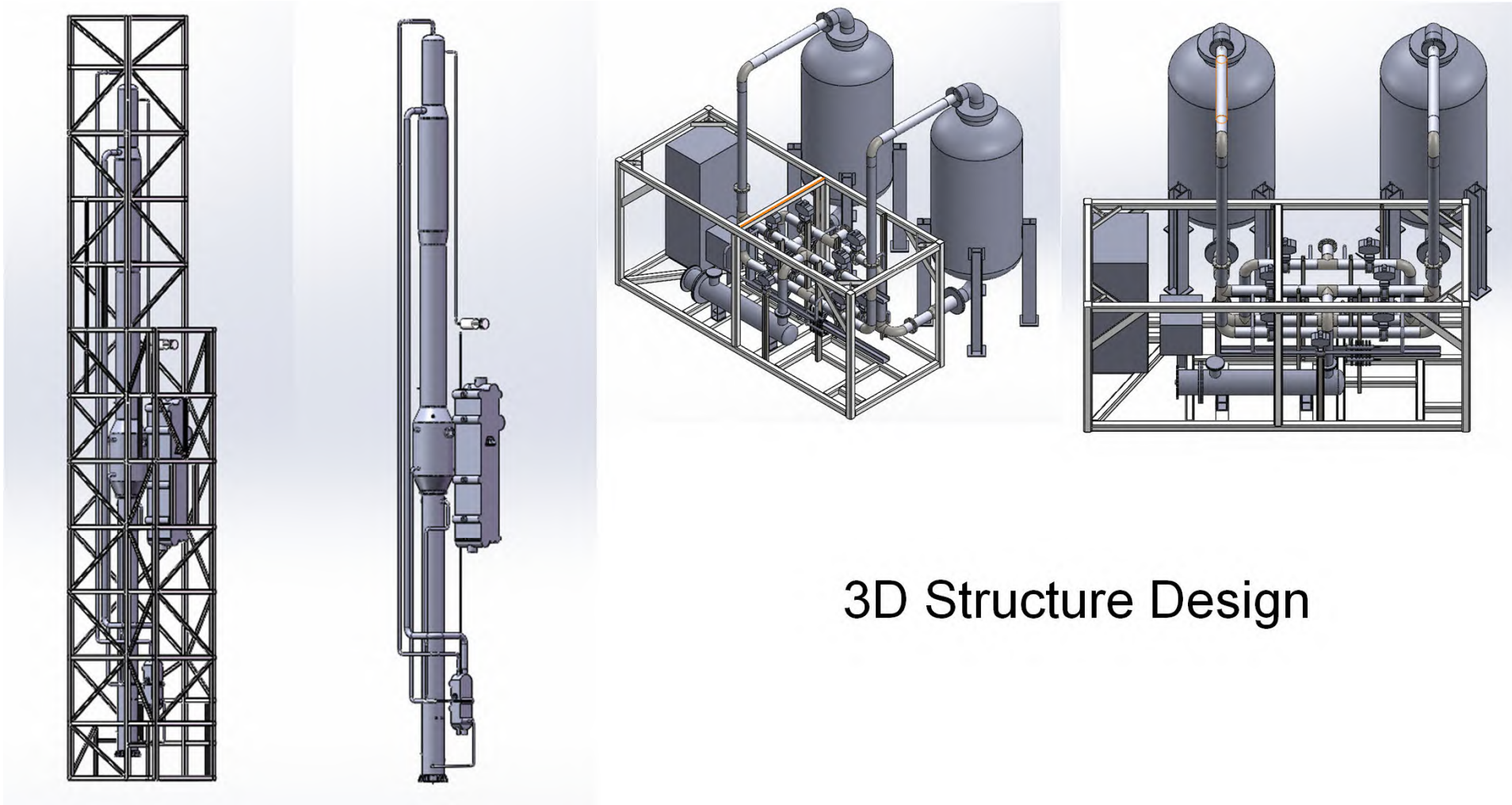
## 3D Structure Design

### Nitrogen Generator-Double Column

## Design Software



苏维泰  
S U W I T E



## 3D Structure Design

[www.wintekgroup.com](http://www.wintekgroup.com)

Mobile: +86 18936090872

[sales@wintekgroup.com](mailto:sales@wintekgroup.com)



## Certificates

# 江苏省民营科技企业

苏民科企证字 第 20210232052024073100353 号

苏州王泰机械工程有限公司

经备案符合《江苏省发展民营科技企业条例》的有关规定，  
特发此证。

有效期：二〇二一年八月至二〇二四年七月

江苏省民营科技企业协会

二〇二一年八月

## Jiangsu Provincial Technology Enterprise Qualification

## Certificates

### 对外贸易经营者备案登记表

备案登记表编号: 04242548

统一社会信用代码: 91320505321191442Y

进出口企业代码: \_\_\_\_\_

经营者中文名称	江苏维泰科工业科技有限公司		
经营者英文名称	Jiangsu Wintek Industrial Technology Co., Ltd.		
组织机构代码	_____	经营者类型 (由备案登记机关填写)	有限责任公司
住 所	苏州市高新区绿宝休闲购物广场2幢8005室		
经营场所 (中文)	苏州市高新区绿宝休闲购物广场2幢8005室		
经营场所 (英文)	2-8005, Lvbaop Plaza, New District, Suzhou, Jiangsu, China		

International Trade License By Ministry of Commerce, P.R. China

# 【04】

---

# Hardware



## Hardware



150T Heavy Cranes(double hooks)



12m Edge Milling Machine



Vacuum Furnace for BAHX Heat Exchanger



X-ray test machine

## Hardware



Automatic sand blasting and derusting painting drying room



CNC plasma cutting machine



Vacuum sucker for steel sheet

[www.wintekgroup.com](http://www.wintekgroup.com)



NC flame cutting machine

Mobile: +86 18936090872

[sales@wintekgroup.com](mailto:sales@wintekgroup.com)



## Hardware



12m double drive edge milling machine



Radial drilling machine



Automatic four roll bending machine

[www.wintekgroup.com](http://www.wintekgroup.com)



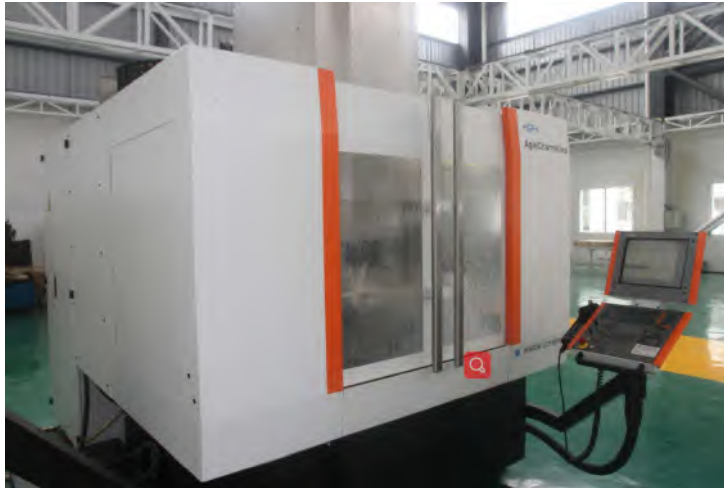
Stainless steel edge milling machine imported from Germany

Mobile: +86 18936090872

[sales@wintekgroup.com](mailto:sales@wintekgroup.com)



## Hardware



Vacuum sucker for steel sheet



Rocker arm automatic welding machine



Spectrum analyzer



X-ray test machine

# Thank you!

Keep Exceeding to Make Excellence

Attn: Michael Wang(Wang Rongqiang)

Jiangsu Wintek Industrial Technology Co., Ltd.

Location: Suzhou City, Jiangsu Province, China

Whatsapp/Telegram/Wechat ID:+8618936090872 Email: [sales@wintekgroup.com](mailto:sales@wintekgroup.com)

Website: [www.wintekgroup.com](http://www.wintekgroup.com)

[wintekgroup.en.alibaba.com](http://wintekgroup.en.alibaba.com)